

E.R.I.C.[™] Metering Pump

EFFICIENT • RESPONSIVE • INTELLIGENT • CONTROL



The Intelligent Chemical Metering Pump

E.R.I.C.[™] Metering Pump

EFFICIENT • RESPONSIVE • INTELLIGENT • CONTROL

The Intelligent Chemical Metering Pump

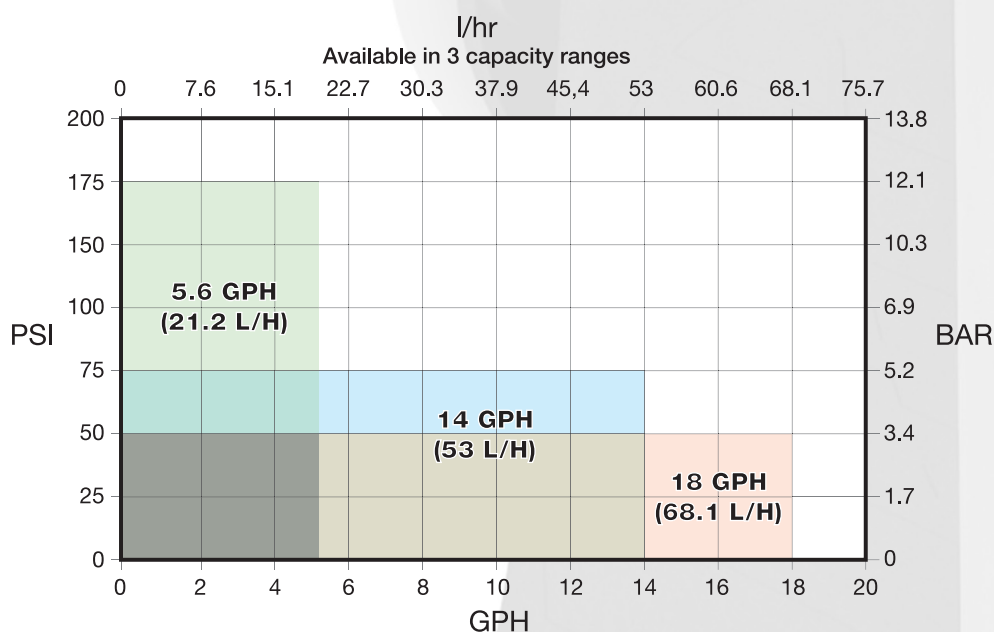
Introducing E.R.I.C.[™] chemical metering pumps: engineered to meet today's most demanding standards for accuracy, reliability, and process control flexibility. E.R.I.C. is not just clever or smart, but a metering pump so intelligent and advanced that it's sure to make a name for itself.

Milton Roy designed the E.R.I.C. series from the ground up based on valuable feedback received from our customers as well as treatment plant maintenance, operators, and industry experts.

The E.R.I.C. metering pump features enhanced performance and process control capabilities built on a universal technology platform with the ability to adapt as technology evolves.

Whatever your application, the E.R.I.C. metering pump is ready to outperform and outsmart your most demanding application.

E.R.I.C. Performance chart



Applications:

Milton Roy manufactures controlled volume metering pumps for a wide range of industries and applications. E.R.I.C. is designed for the specific requirements of municipal and industrial water and waste treatment but is suitable for many more applications.

- Water treatment
- Waste water treatment
- General Industry
- Agricultural
- Chemical
- Oil & Gas
- Power generation
- Pulp & paper
- Textiles
- Other (contact your local authorized representative)

Valued reputation

At Milton Roy, we take pride in the relationships we've built and the partnerships we've formed. We work hard every day to earn the trust and confidence of our customers. We believe it's this reputation that sets us apart from the competition. Our goal is to manufacture world-class pumps and accessories and to respond to our customers' needs with a sense of urgency and mutual respect. Year after year, we continue to build more than just great pumps!

Culture of innovation

With over 80 years of innovative excellence, Milton Roy continues to build superior products to meet our customers' toughest metering pump applications. Milton Roy consistently delivers the most reliable, comprehensive range of metering pumps on the market today. Our professional and experienced research and development team continues to make huge strides in innovation for tomorrow.

Our global network

With strategically located manufacturing sites and channel partner experts to support you globally, Milton Roy is with you wherever you are. Visit us online at miltonroy.com to find your local authorized representative.

Our commitment to quality

Milton Roy is committed to delivering products of the highest quality standards to our customers. This commitment begins with a culture to continually improve our products and processes by implementing a quality management program based on best practices. Because of this commitment, Milton Roy's pumps are the most reliable and highly regarded pumps on the market.

Easy model selection

Selecting the right pump just got easier. No complicated configurations are necessary to find the right pump. With the Manual and Enhanced models offered, simply pick the features that fit your needs (see page 6 for a complete list). Both models offer a wide range of functionality including backlit display, multilanguage, and remote signals to name only a few.



Pictured: Manual model

Features and Benefits

Milton Roy is setting the standard for accuracy and reliability

Milton Roy continues its commitment to innovation and technological advances with the introduction of the E.R.I.C. Metering Pump. Designed to meet the most challenging application needs, the E.R.I.C. metering pump brings a new level of accessibility and performance to the field.

A comprehensive product offering:

- E.R.I.C. series flow rates extend from 0.006 to 18 GPH (0.023 to 68 l/hr)
- Mechanically actuated diaphragm for years of reliable service
- +/- 1% steady state accuracy over 1000:1 turndown ratio
- Backed by a three-year warranty



Highly efficient mechanically actuated diaphragms

Maximum evacuation on every stroke regardless of capacity setting

Universal technology platform

Able to adapt as technology evolves

Advanced easy-to-use operation interface

Backlit color display and enhanced settings enable maximum application customization

Rugged construction

Upgraded NEMA 4X/IP 65 housing and protective cover for the harshest environments

Input/Output

- Manual model - Ideal level of standard features
- Enhanced model - Full range of features

Remote connectivity

Control and feedback in real time

- Enhanced model - Multiple methods of connection to process control signals whether analog or digital

Universal power supply

Providing maximum flexibility

Pictured: Enhanced model

Multilanguage, user-friendly navigation

E.R.I.C.'s backlit color display allows for convenient navigation in five languages: English, French, Spanish, Portuguese, and Chinese. The enhanced control version is ready for digital or analog control interface and an extensive variety of inputs and outputs for various digital and analog devices. E.R.I.C. provides everything you need to assure you have complete control of your process.



Superior control and accuracy

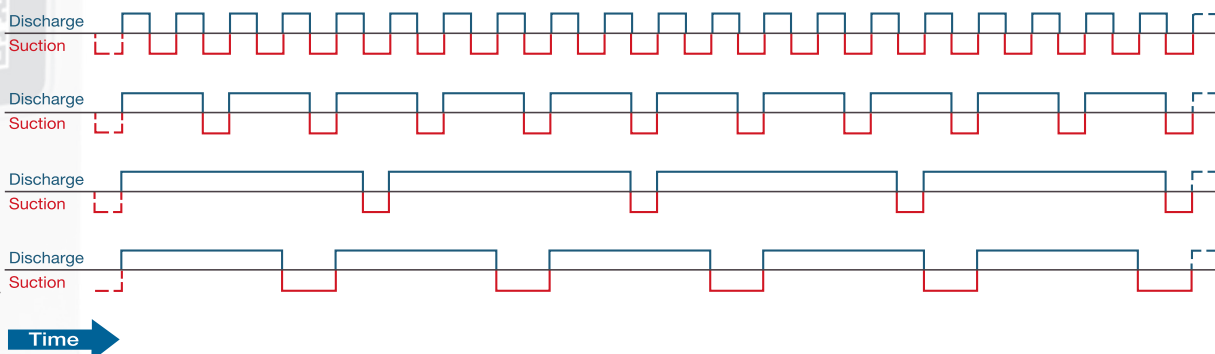
An innovative drive system creates superior $\pm 1\%$ steady state accuracy over 1000:1 turndown ratio by controlling E.R.I.C.'s stroke profile. As a result, E.R.I.C. provides consistent operation and greater flexibility for handling difficult chemicals such as polymers and other viscous fluids.

Capacity Setting

100%

50%

20%



High viscosity settings allow decreased suction speed.
50% suction speed and 50% capacity

Features and Benefits

Electronic control by model

Control Version

Manual model
Enhanced model

User Interface		
Four Color Backlit graphical display	●	●
Flow rate or volume display (GPH, L/hr)	●	●
Capacity setting display	●	●
Start/Stop button	●	●
Mode/Select button	●	●
Full capacity (100%) button	●	●
Prime button	●	●
Active operation mode indication on display	●	●
Active alarm indication on display	●	●
Calibration status indication on display	●	●
Operation Modes		
Manual (Internal)	●	●
Analog [0/4-20 mA] (External)		●
Pulse [volume/pulse] (External)		●
Batch (External)		●
Cycle Timer (Internal)		●
Timed event (Internal)		●
Control Input		
Programmable digital contacts	1	4
Single level float switch	●	●
Dual low level float switch		●
Pulse control		●
Remote start/stop	●	●
Remote internal/external mode selection		●
Programmable analog inputs	0	2
Pacing		●
Tank level		●

Control Version

Manual model
Enhanced model

Control Output		
Programmable digital contacts	0	2
Pump running		●
Pump standby/stopped [not pumping but ready]		●
Alarm status		●
User alarm status		●
Internal/External mode indication		●
Pump stopped		●
Stroke pulse		●
Timed event running		●
Programmable analog output	0	1
Flow rate [4-20 mA correlates to 0 - max capacity]		●
Mirror analog input 1		●
Power supply for remote device [24V] (eg. Flow sensor)	0	1
Operation functions		
Capacity control by motor speed variation	●	●
Variable stroke profile (variable discharge speed/constant suction speed)	●	●
Slow suction mode for viscous or degassing media	●	●
Calibration function (single point)	●	●
Prime feature (max capacity) button, timer	●	●
Totalizer (strokes, volume, hours motor operation, number of power cycles)	●	●
Keypad lock (software driven with password)	●	●
Clock feature (date and 12 hour time)	●	●
Diaphragm replacement mode (sets stroke to extended position)	●	●
Display firmware revision	●	●
Load factory defaults	●	●
Battery to maintain date and time settings when main power is removed	●	●
EEPROM nonvolatile memory (configurations saved/powers up in last used mode)	●	●
Internal/External input control mode configuration	●	●
Alarm output mask configuration (configure which events trigger alarm output relay)	●	●
Analog input response curve customization		●
Input pulse width setting		●
Stat/Stop via remote signal	●	●
Pump switch off on tank empty	●	●

Making E.R.I.C. pumps work for you

For integrators

Specifying E.R.I.C. metering pumps for critical systems gives process systems integrators the best guarantee of reliability, accuracy, and performance in challenging environments.



For operators

Consider the value of installing an E.R.I.C. metering pump when making updates to your equipment. The E.R.I.C. pump series offers field-proven dosing technology, a state-of-the-art technology platform, and an easy-to-use navigation system all backed by authorized industry experts to support you long after the installation.

Options and accessories

A wide range of options and accessories are available to customize the E.R.I.C. metering pump to your application.

Mechanically actuated diaphragm liquid end materials:

- Polypropylene
- PVDF
- 316L stainless steel

E.R.I.C. accessories include:

- Backpressure valves
- Safety valves
- Pulsation dampeners
- Calibration columns
- Degassing valves and systems



We are a proud member of Accudyne Industries, a leading global provider of precision-engineered, process-critical and technologically advanced flow control systems and industrial compressors. Delivering consistently high levels of performance, we enable customers in the most important industries and harshest environments around the world to accomplish their missions.



Contact your local representative to find out more about E.R.I.C.™
the intelligent pump that's making a name for itself.

Americas

201 Ivyland Road
Ivyland, PA 18974, USA

info@miltonroy.com
www.miltonroy.com
www.ericpumps.com

Europe, Middle East, Africa

10 Grande Rue
27360 Pont-Saint-Pierre, France
Tel: +33-(0) 2-32-68-3000
Fax: +33-(0) 2-32-68-3093

mr14.contact@miltonroy.com
www.miltonroy-europe.com

Asia

510 Thompson Road
#13-01, SLF Building
Singapore 298135
Tel: (65) 6568-2800
Fax: (65) 6259-9897

salesaccsg@miltonroy.com
www.miltonroy.com.sg

Building 1, No. 879 Shen Fu Road
XinZhuang Industrial Zone
Min Hang District
Shanghai, China 201108
Tel: 8621 6121 1600
Fax: 8621 5442 5265

marketing.mris@miltonroy.com
www.miltonroy.com.cn

Plot No: P 45/1
Domestic Tariff Area 8th Avenue
Mahindra World City
Chengalpattu - 603 002, India
Tel: 91-44-2225-4000 to 3
Fax: 91-44-2225-4004

miltonroyindia@vsnl.net
www.miltonroyindia.com

E.R.I.C. is a trademark of Milton Roy, LLC
© 2016 Milton Roy, LLC. All Rights Reserved.

