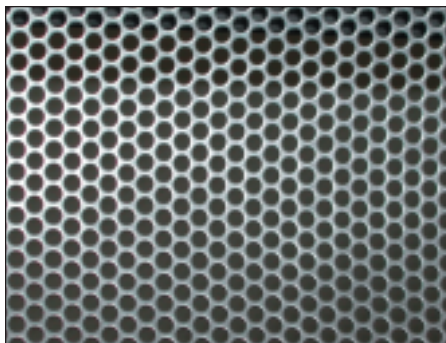


Aqua Guard® PF

Perforated-Plate Media, Channel Screen



The Aqua Guard® PF screen is a self-cleaning, in-channel screening device that utilizes perforated plate media to automatically remove a wide range of solids from wastewater. The screen design is built on the Aqua Guard® bar/filter screen chassis that has been proven successful with over a thousand units installed and in operation. The Aqua Guard PF can be made with the heavy duty “S” chain or the standard duty chain.

Principle of Operation

Solids contained in the wastewater flow are captured on the screen media and carried upward on the plate panels to discharge at the rear of the unit. At the discharge point, the plate panels are cleaned with a brush assembly and water spray. The drive sprocket has been enlarged to enable the brush and spray to make the most efficient cleaning contact with the panels.

The screen media is available in a variety of openings, with 1/4" (6mm) the most common. In some instances, perforated screens have shown to remove higher quantities of solids than other types of in-channel screens.

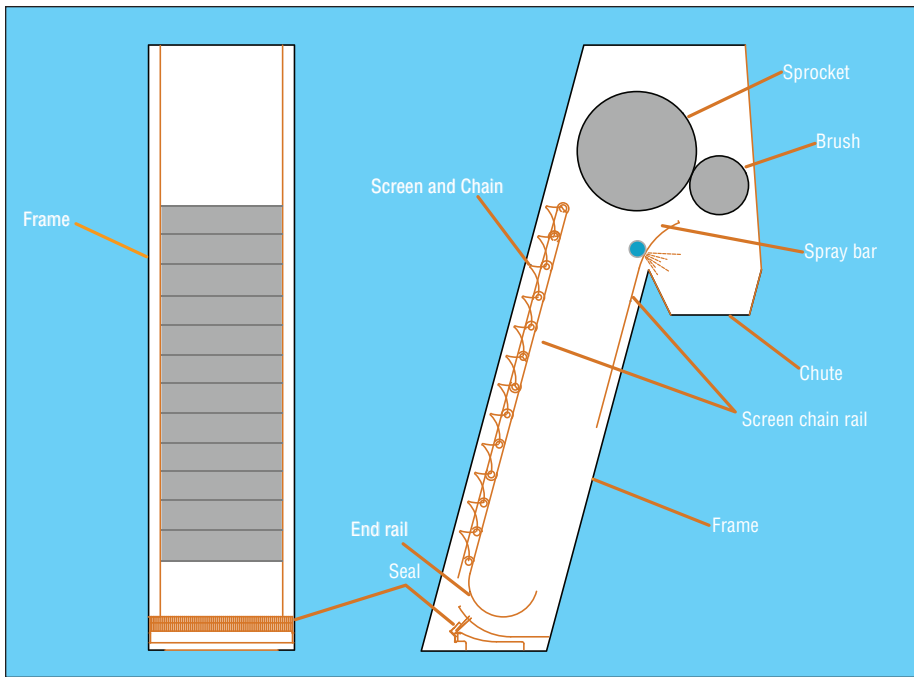


Features

- No submerged bearings
- Low power consumption
- Self-cleaning
- Intermittent operation
- All moving parts can be accessed and serviced above water level
- Perforated plate media
- Ability to build precoat
- Flows to 150 MGD in a single unit
- Delivered fully assembled
- No attachment to sides or bottom of channel
- Aqua Guard design with slack back
- Holes in side frame

Benefits

- Low operation and maintenance costs
- High capture rates
- High capacity
- Ease of installation
- Less headloss



Design Parameters

Standard screen widths are 2.0' to 9.0' with flow rates up to 150 MGD with the single largest unit. Two frame styles are available depending on space and channel depth requirements. Type A is a pivoting design and Type T is a stationary design.

The Aqua Guard® PF screen can be installed at angles of 60°, 75° and 85° depending on the frame and model selection. For maximum efficiency of operation, greater loading rates and higher solids removal, the recommended angle of inclination is 75°.

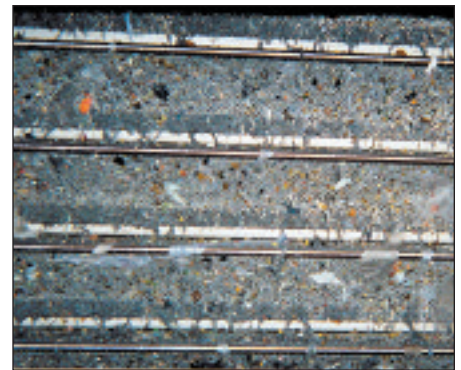
Movement of the screen can be continuous or intermittent. However, intermittent operation is recommended. This allows a mat of solids to build on the perforated plate media which increases the solids capture rate.

Aqua Guard® PF Design Advantages

- Longer step provides greater carrying ability
- 20% more open area
- Less headloss
- Proven chain strength
- Greater protection under surge conditions



The reliable Aqua Guard design and the precoat capture efficiency of perforated plate screen media



Fort Lauderdale

Chicago

Montreal

Dubai

ISO 9001:2008 Certified
Quality Management System

www.parkson.com
technology@parkson.com

1.888.PARKSON
1.954.974.6610

AN AXEL JOHNSON INC. COMPANY



SCFC-AGPF020109 ©2009 Parkson Corporation